

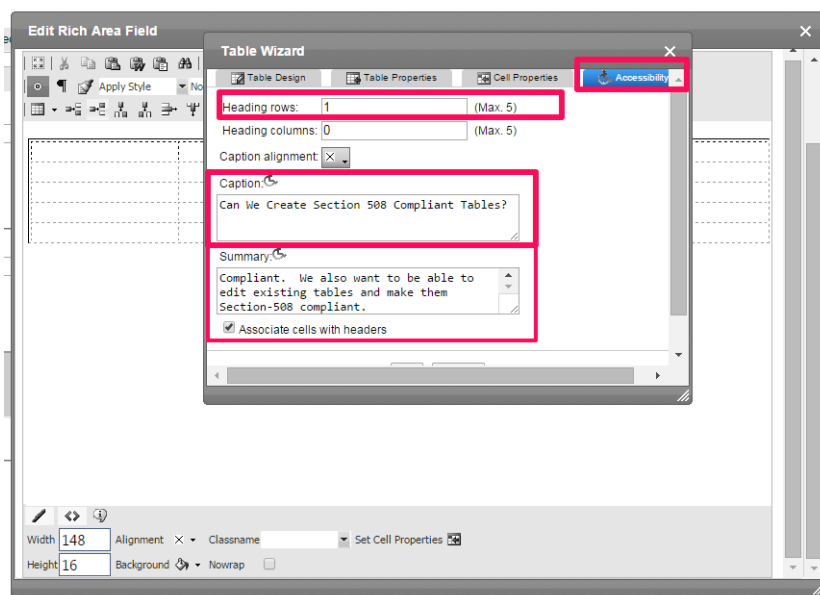
# Ektron Website Quick Reference

## Creating a Section 508-Compliant Table

Narrative software uses the information from the Accessibility table fields (heading rows, columns, caption alignment and summary) to produce a Tooltip message for each table cell. Users with impaired vision can see those Tooltips as they hover over the cells.

To create a  -compliant table:

1. Create a new table or edit an existing one.
2. Right click in the table and choose **Set Table Properties**. The Table Properties dialog appears.
3. Click the **Accessibility** tab
  - o Enter the number of heading rows (if applicable),
  - o Enter the number of heading columns (if applicable).
  - o Choose Table Caption Alignment
  - o Enter Table Caption – only if you do NOT have a title or heading directly above the table describing the table contents. If you add both a title above the table and fill out the caption make sure they say the same thing in different ways or you will have created a redundant title.
  - o Enter Table Summary
  - o Check the box to Associate Cells with Headers



### Accessibility Tab Field Descriptions

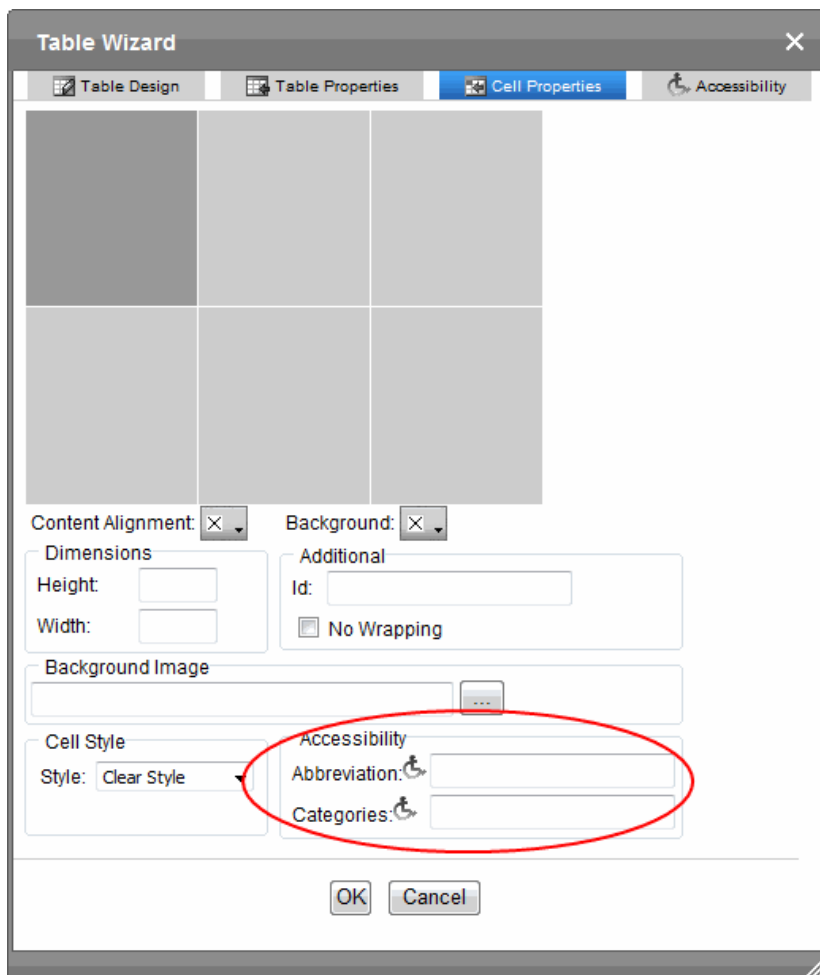
- **Heading Rows**—If you want your table to have a horizontal header, enter the number of rows that it should occupy. The number cannot exceed five. Beginning with the top, all cells in the specified number of rows are designated as table headers.
- **Heading Columns**—If you want your table to have a header, enter the number of columns that it

should occupy. The number cannot exceed 3. Beginning with the left column, all cells in the specified number of columns are designated as table headers.

- **Caption Alignment**—To choose the caption’s alignment, click the down arrow next to this field. Click the box that represents the alignment style you want.
- **Caption**—Enter a table caption. The caption appears above the table. The caption’s alignment is set in the **Caption Alignment** field.
- **Summary**—Enter the table summary. Non-visual browsers use the summary to explain the table’s contents. From [HTML Techniques for Web Content Accessibility Guidelines 1.0](#):  

“A summary of the relationships among cells is especially important for tables with nested headings, cells that span multiple columns or rows, or other relationships that may not be obvious from analyzing the structure of the table but that may be apparent in a visual rendering of the table. A summary may also describe how the table fits into the context of the current document. If no caption is provided, it is even more critical to provide a summary.”
- **Associate Cells with Headers**—Check this box if you want to associate the table’s data cells with the appropriate headers. See Also: [H43: Using id and headers attributes to associate data cells with header cells in data tables](#)

4. Click on the **Cell Properties** tab to set the **Abbreviation** and **Categories** fields (Optional).



### Field Descriptions for Cell Accessibility (Optional)

- **Abbreviation**—Sets or retrieves abbreviated text for the content in the tag. Can be used to render non-visual media, such as speech or Braille. For more information, see [abbr attribute | abbr property](#)
- **Categories**—Sets or retrieves a comma-delimited list of conceptual categories associated with that tag. Can be used to render non-visual media, such as speech or Braille. For more information, see [axis attribute | axis property](#)

5. Click **OK** to make the table **Section 508**-compliant.